



**Hach CityGuard™ Server Installation Guide**  
**Version 1.0.0**  
**September 4, 2009**

## *Table of Contents*

<b>1</b>	<b>PURPOSE.....</b>	<b>3</b>
<b>2</b>	<b>INTRODUCTION.....</b>	<b>3</b>
<b>3</b>	<b>INSTALLING THE CITYGUARD SERVER .....</b>	<b>3</b>
3.1	CONFIGURING AND RUNNING APACHE .....	4
3.2	CONFIGURING THE CITY GUARD SERVER .....	4
3.3	START UP AND LOGIN.....	5
3.3.1	<i>Licensing.....</i>	5
3.3.2	<i>Main map screen.....</i>	7
3.4	MANAGING THE CITYGUARD SERVICES .....	8
3.4.1	<i>CityGuard Configuration Changes.....</i>	8
3.4.2	<i>Managing CityGuard Users.....</i>	8
<b>4</b>	<b>UPGRADING THE CITYGUARD SERVER.....</b>	<b>11</b>

# 1 Purpose

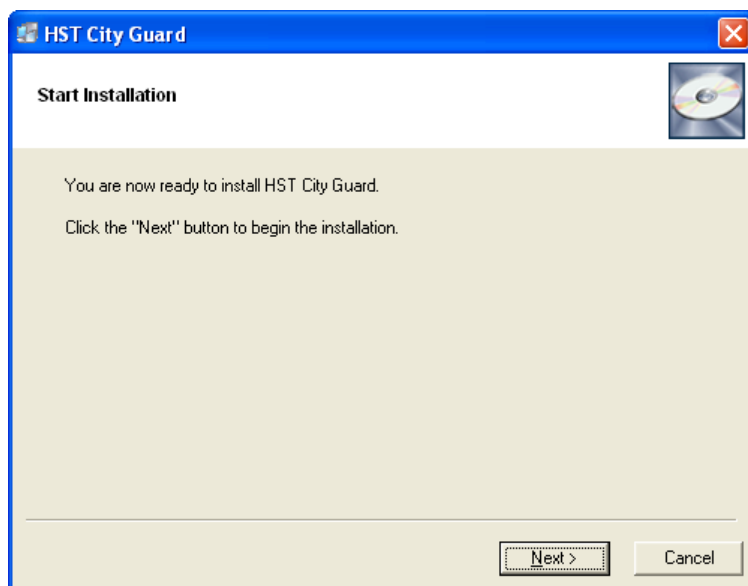
The purpose of this document is to define the activities associated with installing the Hach CityGuard Server.

## 2 Introduction

The Event Monitor™ and Guardian Blue™ Event Detection System applies algorithm to multiple-parameter input and calculates a single trigger signal indicating water quality changes in the distribution system or source water system. The CityGuard Virtual Command Center is intended to provide a web based interface to view and interact with one or many Event Monitor Trigger Systems (EMTS).

## 3 Installing the CityGuard Server

To install the CityGuard server, run the latest CityGuard .exe installer and select the "Next" button.



The CityGuard installer is an unattended installer and will take approximately 5 minutes. Time will depend on the processor and memory of your system. During the installation a number of command prompts and progress indicators will appear. The installer will:

- Install Ruby (ruby186-27\_rc2.exe)
  - Install Ruby Gems (c:\CityGuard\Tools\CityGuardGemsInstall.bat)
  - Create the CityGuard Services (c:\CityGuard\Tools\CityGuardCreateService.bat)
- Install Apache (apache\_2.2.11-win32-x86-openssl-0.9.8i.msi)
  - Create the Apache Service
- Install Postgres (postgresql-8.3.7-1)
  - Creating the City Guard database and user role (c:\CityGuard\Tools\Create\_DB\_DBUser.bat)
  - Creating the City Guard database tables (c:\CityGuard\Tools\Create\_DBTables.bat)
  - The Postgres database password is set to: C1tyGu@rd

If the CityGuard server doesn't load the configuration file verify that the CGConfig.xml is valid xml.

## 3.1 Configuring and Running Apache

To configure Apache you will need to know:

- Server Name. Your server's full DNS name. From the example above, you would type server.mydomain.net here.
- Administrator's Email Address. Enter the server administrator's or webmaster's email address here. This address will be displayed along with error messages to the client by default.

From the Start menu and select Edit the Apache httpd.conf Configuration File from the Apache program group. This will open the main configuration file used by Apache. Scroll down to the ServerName and ServerAdmin httpd.conf sections and edit for the customers environment.

- Server Name:
  - #
  - # ServerName gives the name and port that the server uses to identify itself.
  - # This can often be determined automatically, but we recommend you specify
  - # it explicitly to prevent problems during startup.
  - #
  - # If your host doesn't have a registered DNS name, enter its IP address here.
  - #
  - #ServerName cityguard.hach.com:80
- Server Administrator Email address:
  - #
  - # ServerAdmin: Your address, where problems with the server should be
  - # e-mailed. This address appears on some server-generated pages, such
  - # as error documents. e.g. admin@your-domain.com
  - #
  - ServerAdmin [cityguard@hach.com](mailto:cityguard@hach.com)

## 3.2 Configuring the CityGuard Server

Edit the CGConfig.xml file locate in the "C:\CityGuard \Configurations" directory. This XML file defines which sites appear on the CityGuard map and the associated authentication required to access each managed Event Monitor.

Each site is defined by a name, URL to the Event Monitor IP address or hostname, the latitude and longitude, ( a good site to get lat longs is : <http://www.geocoder.us> ) and the Event Monitor username and Event Monitor password. You can add as many sites as you are licensed to use. The following is the default CGConfig.xml file:

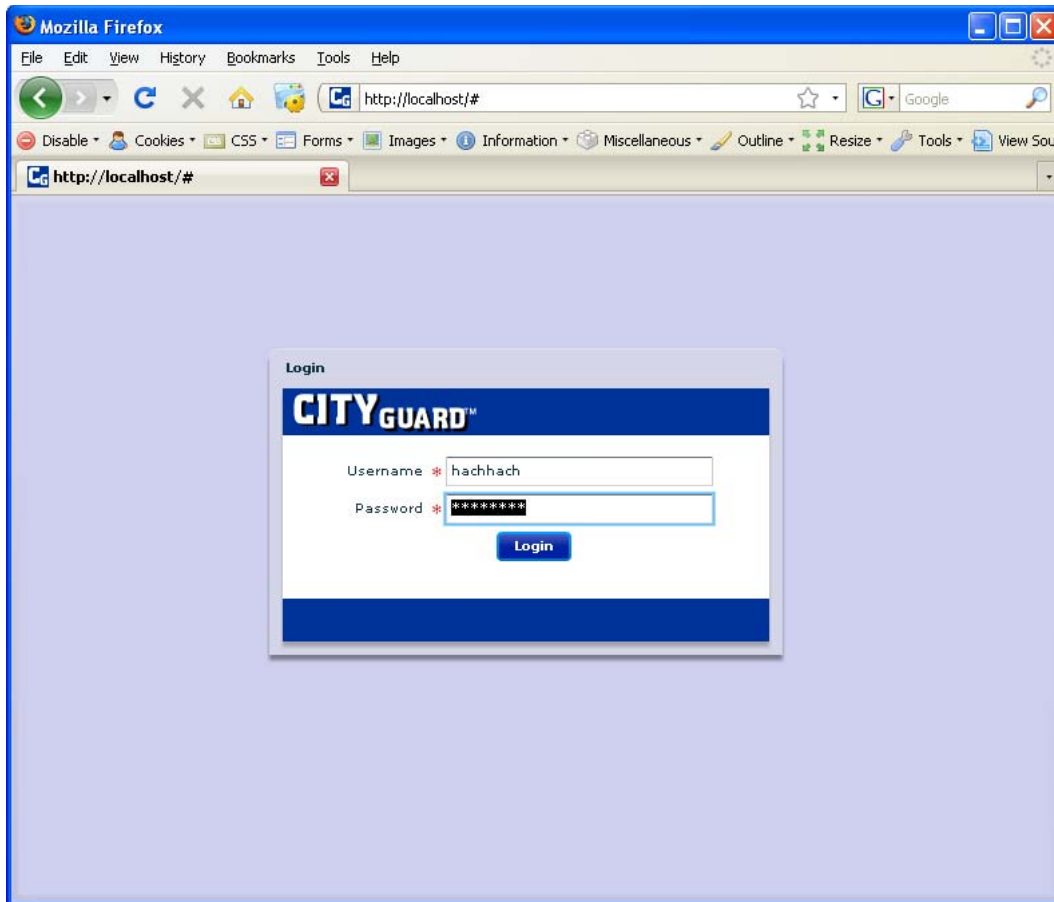
```
<?xml version="1.0" encoding="UTF-8"?>
<!--
$Workfile::          $
$Revision::          $
$Modtime ::          $
Copyright(C)1998-2009 Hach Company
ALL RIGHTS RESERVED
-->
<CityGuard>
  <System ui_type="advanced">
    <Name>Loveland</Name>
  </System>
  <Sites>
    <Site id="1">
      <Name>Hughes Stadium</Name>
      <URL>http://192.168.1.211</URL>
      <Location latitude="40.562517" longitude="-105.141605"/>
      <User>hach</User>
      <Password>hach</Password>
    </Site>
    <Site id="2">
```

```
<Name>29th St Pump Station</Name>
<URL>http://192.168.1.222</URL>
<Location latitude="40.421358" longitude="-105.125838"/>
<User>hach</User>
<Password>hach</Password>
</Site>
</Sites>
</CityGuard>
```

### 3.3 Start Up and Login

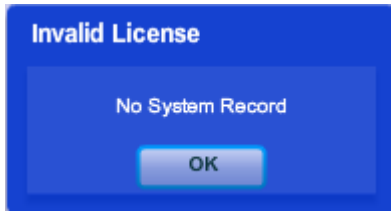
To verify the server is running, open your browser and head to: <http://127.0.0.1/> or <http://localhost/>. You should see the welcome screen. The system is setup with a default user of hachhach and a password of hachhach.

At the main screen login prompt, enter your login and password:

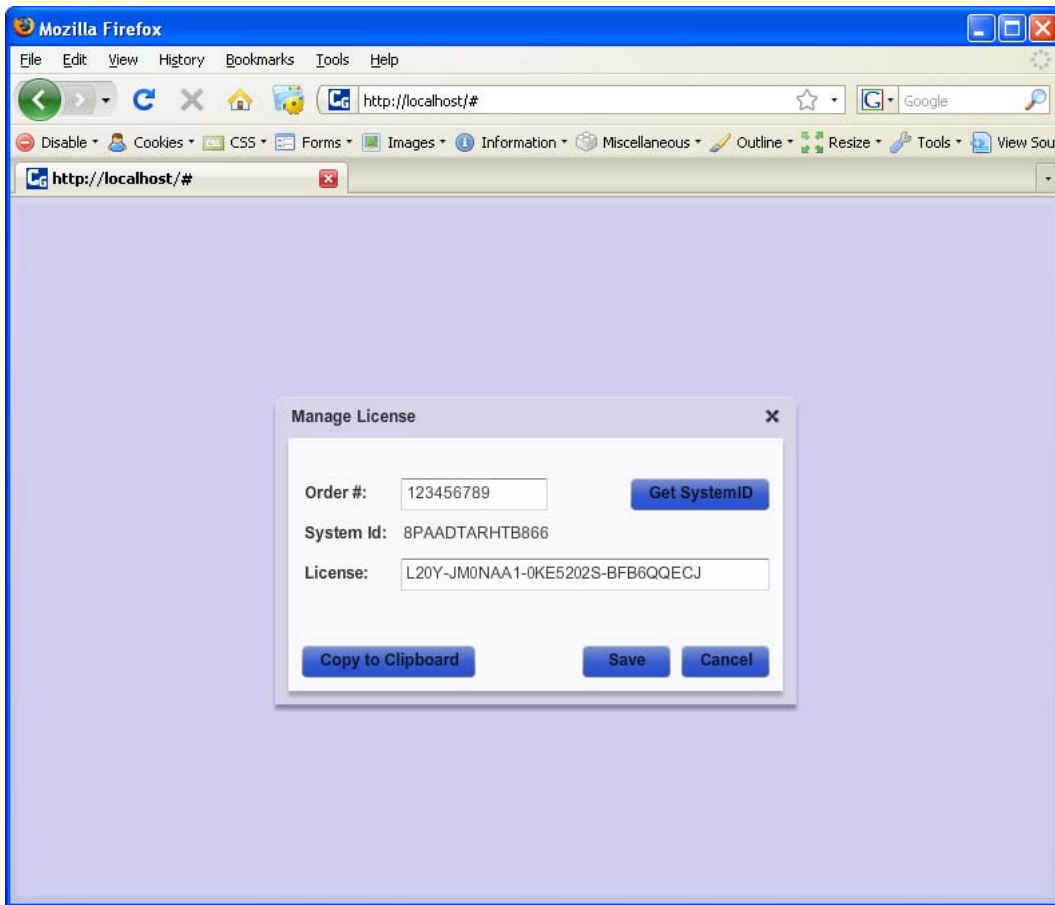


#### 3.3.1 Licensing

New systems will need to be licensed. On newly installed systems the user will receive an invalid license message box.

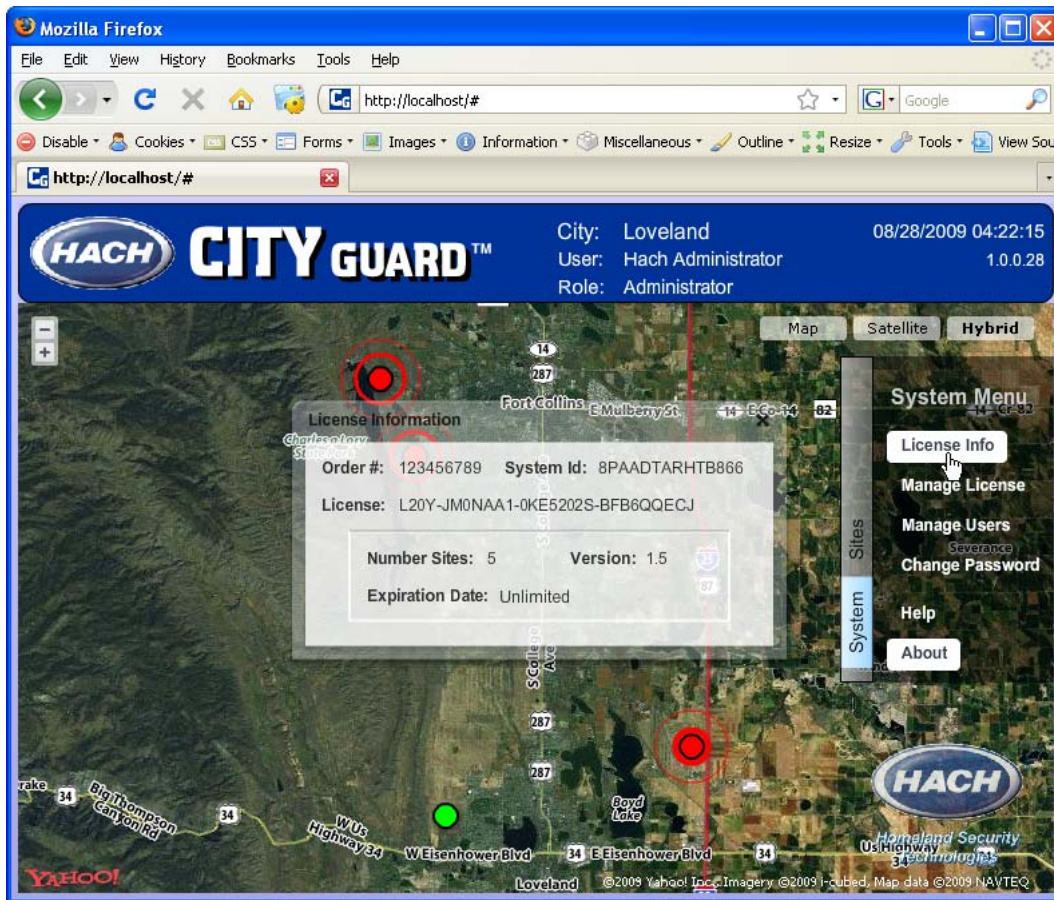


Enter the order id which is a nine digit number, select the "Get System ID" button and provide both the order id and system id to Hach to have a license key generated.



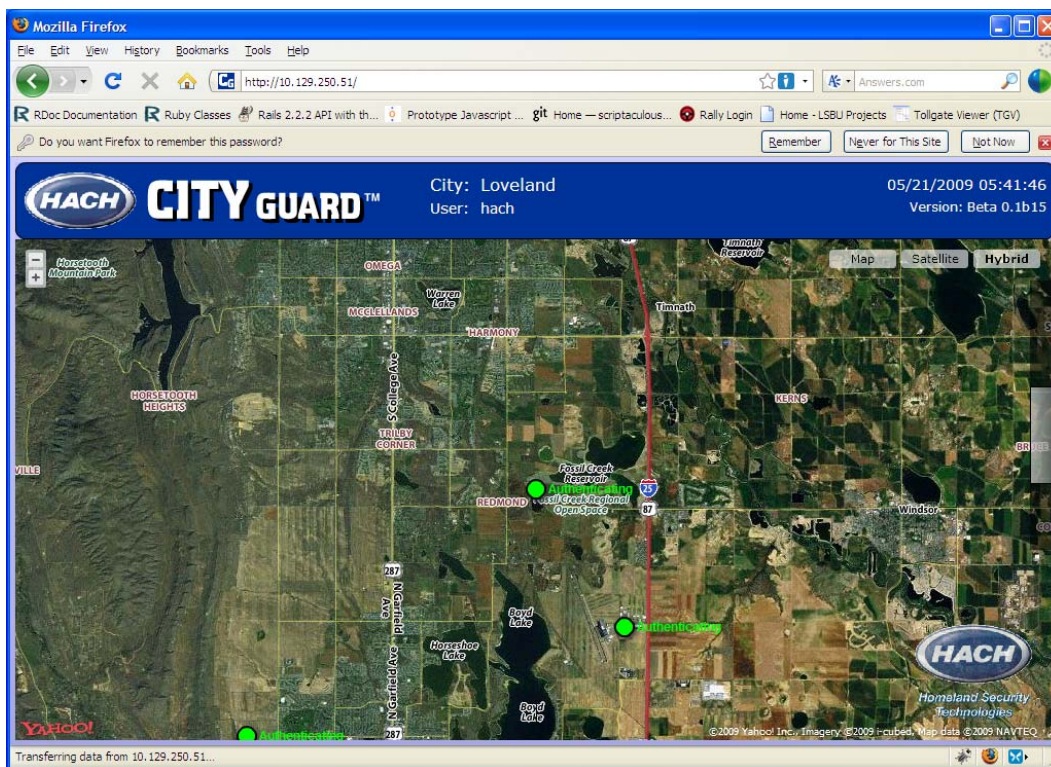
To view the license information select System → License Info

Now send your System ID to technical support and they will give you a license. Tech support can be reached by e-mail at [techhelp@hach.com](mailto:techhelp@hach.com) or telephone at 1.800.604.3493. Go to the System Menu, select Manage license and “copy and paste” into your e-mail for more convenience.



### 3.3.2 Main map screen

Once you are authenticated, you will see the main map screen.

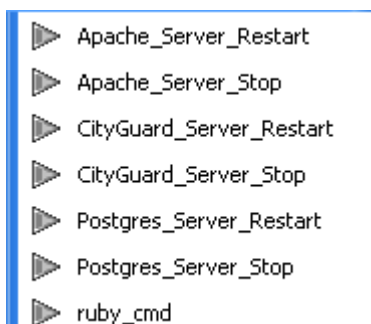


## 3.4 Managing the CityGuard Services

The CityGuard server utilizes an Apache web server front-end with three load balanced back-end servers to process user requests.

For correct operation, the Apache web service, Postgres service as well as the Hach CityGuard 1, Hach CityGuard 2, and Hach CityGuard 3 services must be running.

The various Windows service can be stopped and restarted from the “Hach Company” start menu directory:

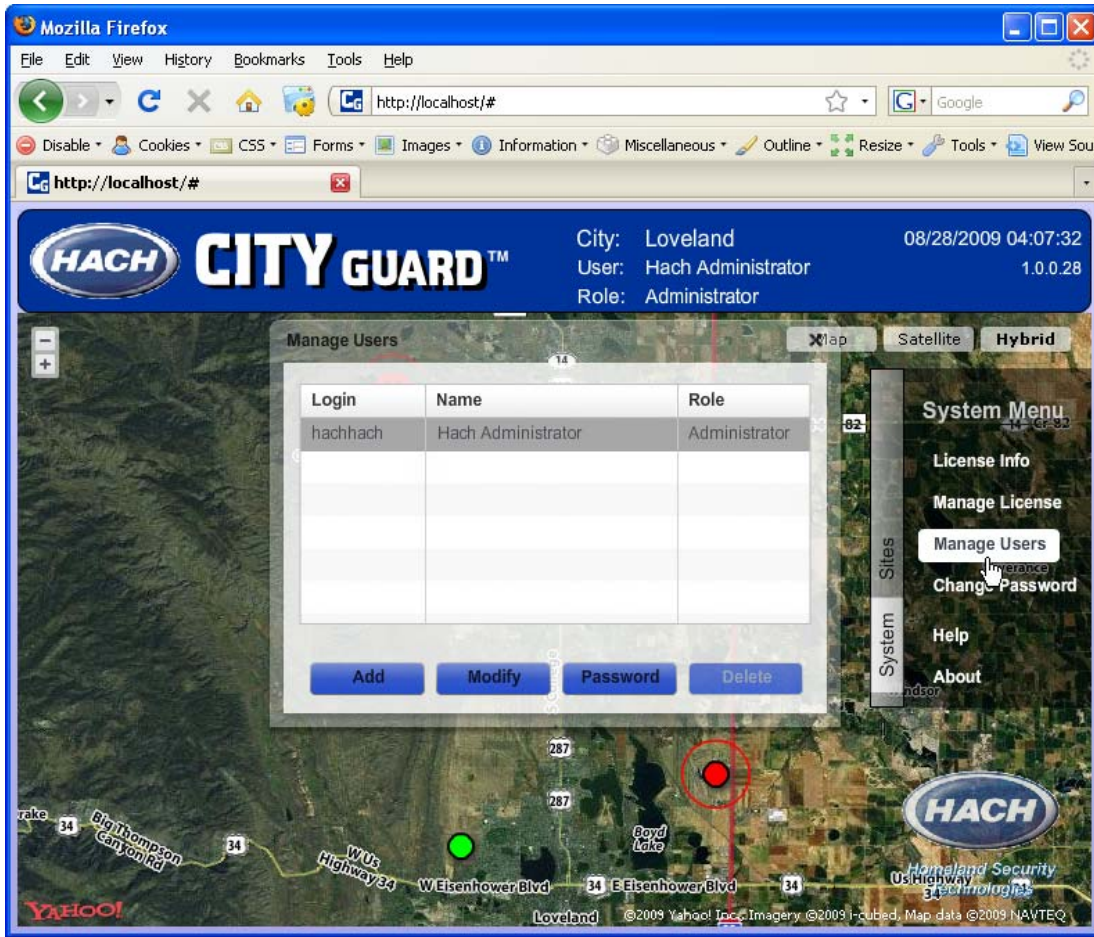


### 3.4.1 City Guard Configuration Changes

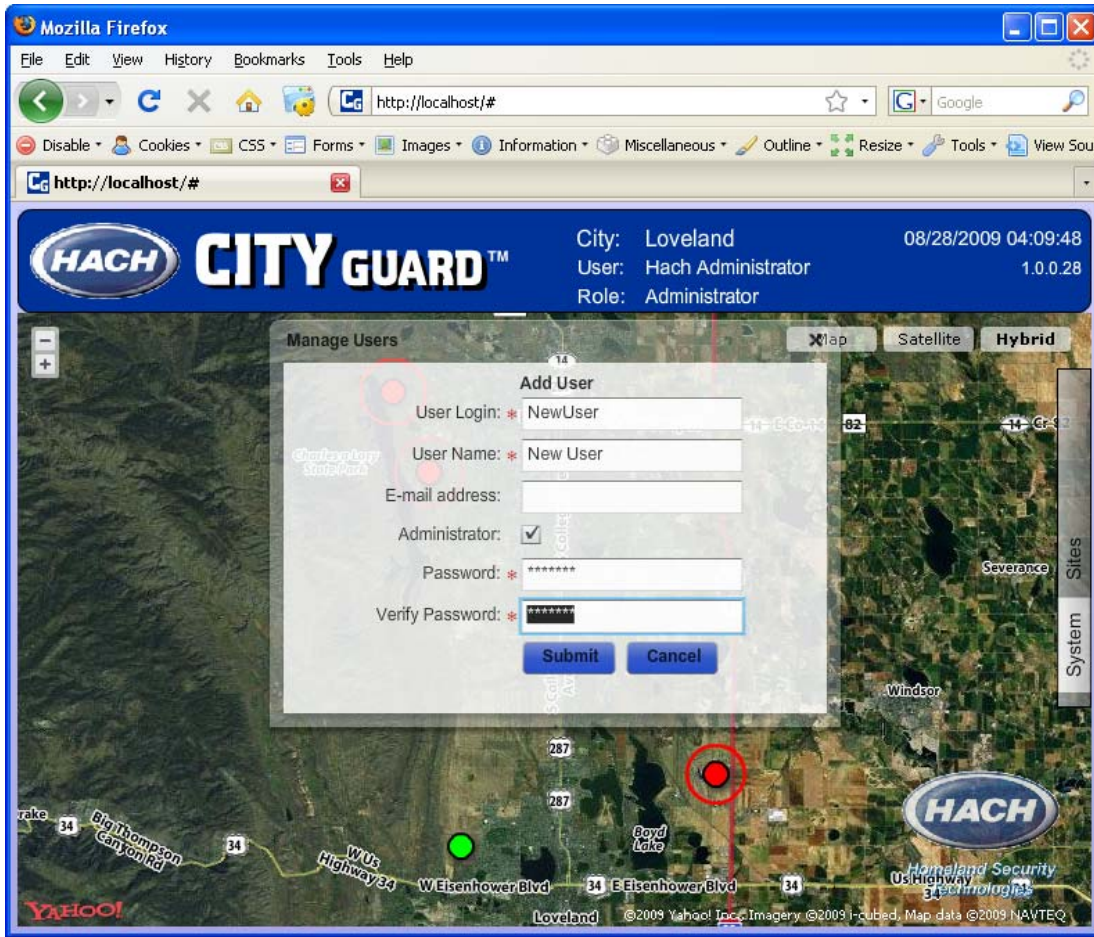
EventMonitor sites can be added and removed by editing the CGConfig.xml file in the c:\CityGuard\Configurations directory. Once a change has been made, the Hach City Guard services must be restarted.

### 3.4.2 Managing CityGuard Users

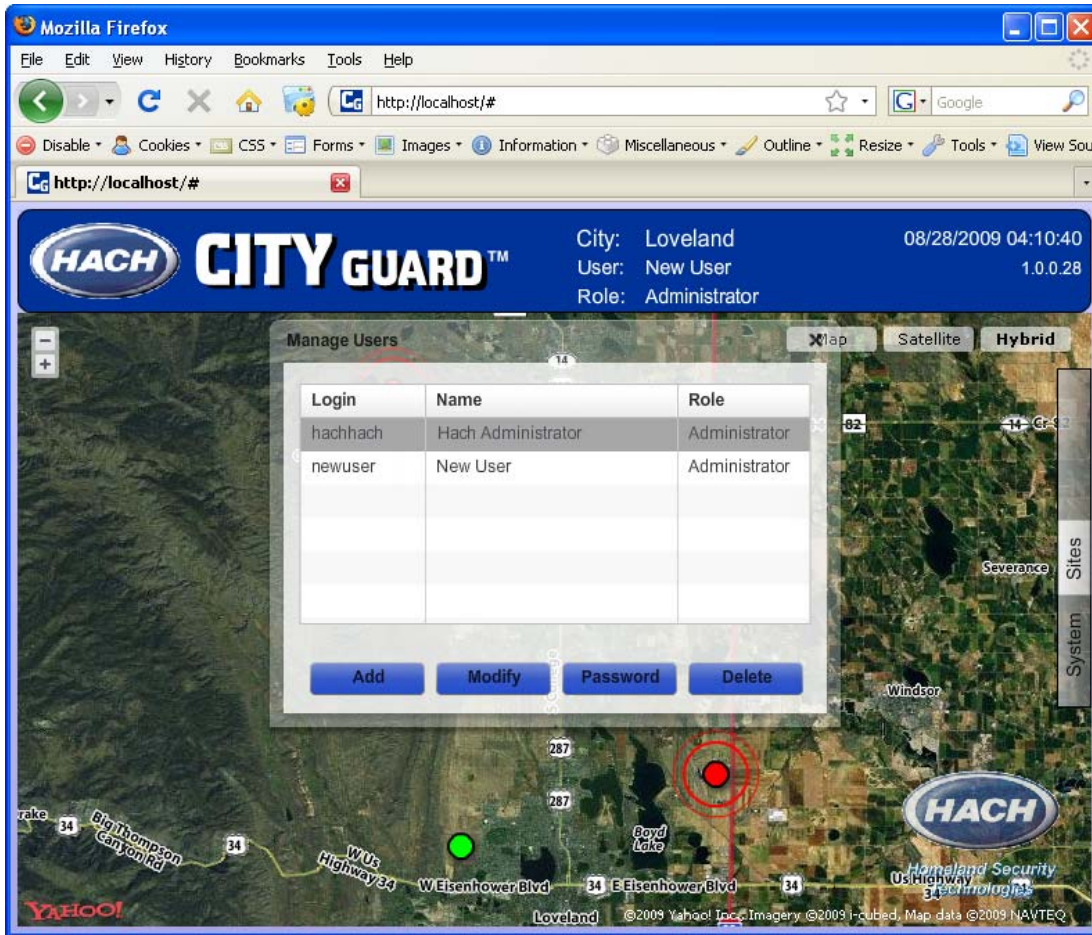
To creating, modify or delete CityGuard users select System → Manage Users



To create a new user you will need to provide a user login, user name and a password

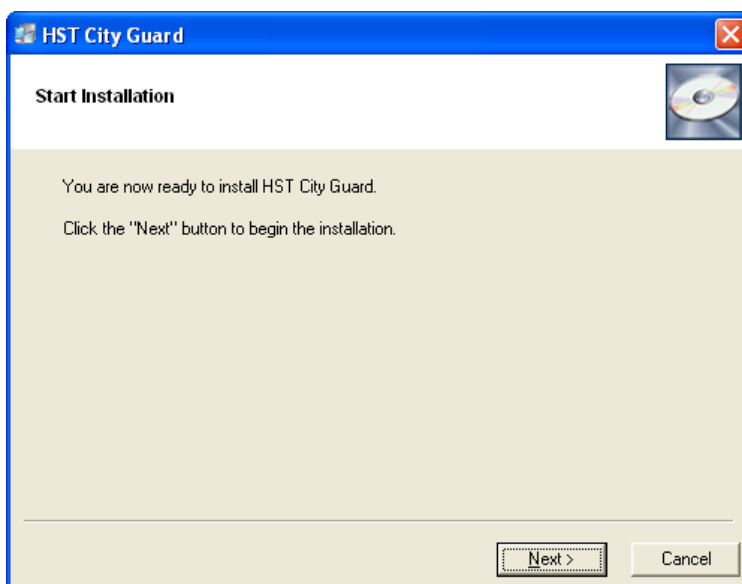


You will need to delete the default hachhach user, create a new user with administrator rights, refresh the browsers and login with the newly created admin user. Once you have done this delete the hachhach default user by select the hachhach row and selecting delete



## 4 Upgrading the CityGuard Server

To upgrade the CityGuard server, run the latest City Guard .exe installer and select the "Next" button



On previously installed systems a dialog will appear indicating that a previous version of Ruby, Apache and/or Postgres was found.

Selecting the "OK" button will proceed without installing Ruby, Apache and/or Postgres. If you need to re-install select the "Cancel" button and exit the installer. Uninstall from "Add or Remove Programs", manually delete the installation directory and re-run the City Guard installer. The following are the installation directories:

- Apache - C:\Program Files\Apache Software Foundation
- Postgres - C:\Program Files\PostgreSQL
- Ruby - C:\Ruby

